

### Solutions for People

alfamedia are at the front with integrated solutions for media companies who want to gather content and publish through multiple channels efficiently.

We have helped our customers in the media industry reach their goals for more than two decades.

# NewsSuite



Gathering  
content  
from  
all  
sources



Managing  
your  
editorial  
content  
workflows



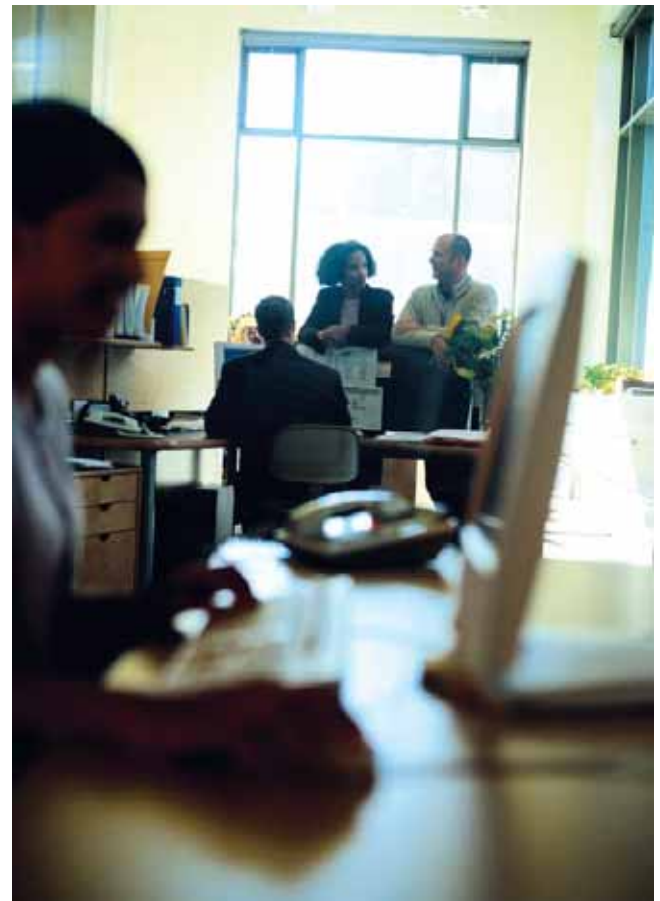
When  
News  
is  
your  
business

### A Fully Integrated Solution

- NewsSuite is an integrated solution for editorial work and covers the entire process, from creating articles to final publishing.
- Every source of content is supported from reporter input to e-mails and input from news agencies. The content is streamlined into an editorial workflow that can be configured to support each publisher.
- Different channels of publishing is supported to maximize the business value for the publisher: Print, Web and Podcasting.
- Tedious procedures in editorial work is automated: Tracking progress, inputting and managing sports tables, managing photo assignments and paying free-lancers.

### Content Is King

- Every media company builds its value in attracting audiences and selling its publications and advertising space. Audiences are attracted by supplying attractive content in the right place at the right time.
- We present content in all the traditional ways of print and web, but add new ways of reaching the audiences: through e-dition our 1-to-1 presentation of the printed publication on the Internet and Podcasting.
- A central archive stores all components and finished publishing items for later reuse.



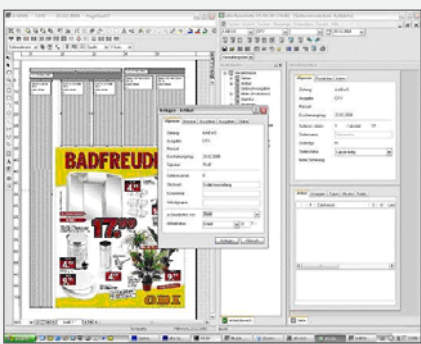
A  
r  
t  
i  
c  
l  
e



The paper on the Web



Integrated production



**>> NewsSuite Enterprise**

NewsSuite Enterprise (NSE) provides all the tools needed for the content based editorial work for publications in the modern cross-media and cross-channel age.

- Journalists have efficient tools for in-house, online or offline work with articles and partial pages.
- Photographers have equally supportive tools for fulfilling photo assignments and collaborating with the central news-room.
- All news agencies can be integrated, input is gathered, converted, formatted and set on route in the editorial workflow.
- Comprehensive workflow management is available, assignment of projects and tasks to workgroups or individuals – also free-lancers.
- OpenMedia CMS is our generalized content and archive management system.
- PageOneXT is our preferred composition and page-makeup tool with much deeper integration and richer productivity features than of-the-shelf design tools.
- Editors can directly manage the different new channels: Portals, Podcasting, RSS, WAP or PDA's.

**>> e-dition on the Web**

Our e-dition product opens the door to content presentation portals on the Internet. It offers a new way of integrating a presence on the Internet with printed products, while protecting the media company's brand and audience.

- Presents a 1-to-1 presentation of the printed publication on the Internet, based on the PDF files for print.
- Intelligent links to content presented on the Internet, readers can read, print and e-mail specific articles, images or ads.
- Advertisements presented can contain extra information and links compared to the printed product. Readers can branch off to see more detailed information presented by the advertiser on the Internet.

**>> Advanced Integrated Workflow**

NewsSuite is a XML based editorial solution using Windows and browser based workstations. It is tightly integrated with the other alfamedia product suites: AdSuite and ProductionSuite. This enables publishers to get editions to print or Web quickly and easily.

- A workgroup concept is supported giving controlled access to articles, pictures, agency bulletins etc. from multiple locations and workstations.
- Management and storage of all elements in the predefined hierarchy (newspaper – edition – section – publication date - headword – etc.).
- Configurable status structure; automatic initiation of various actions when the status is changed.
- Different article versions, e.g. linked to the change in status levels.
- Automatic generation of copies. Usage list for copies.
- Make up of pages as work-in-progress, which can be finalized and then copied or allocated to the pages of the day's edition.
- Variable functions for blocking and releasing articles and pages.
- Automatic transfer of selected texts and pages to an online component. Allows two-way exchange of text and picture data for example.